

# DOCUMENT COMPARISON

Compare, audit and multi-party review documents with Document Compare Server

Anyone who deals with the creation and management of documents knows that the content constantly changes. Changes may be made by the document owner as well as contributors and reviewers, and keeping track of multiple changes to the content of documents can be a difficult and time-consuming process.

Document Compare Server provides users of complex documents with an easy method to quickly identify document changes. Based on Workshare®, the leading server-based document comparison engine, Document Compare Server ensures fast, accurate and reliable document comparisons all from within Partner for Windows Case Manager.

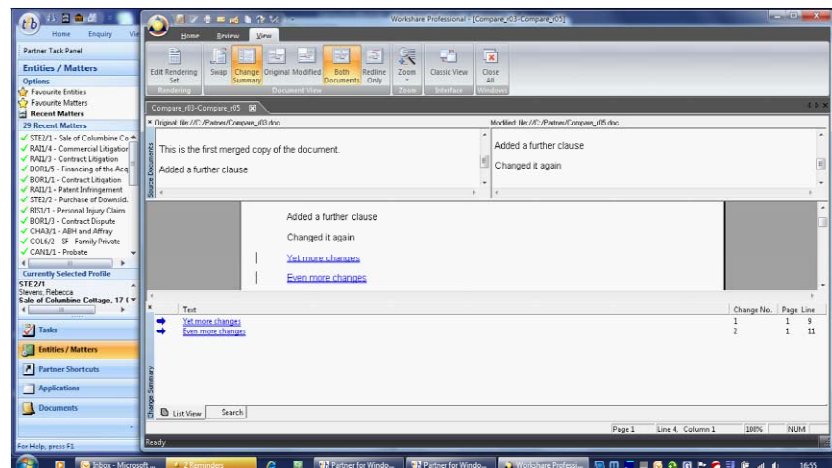


Fig 1. Document Compare Server working in Partner for Windows

Using Document Compare Server, users can compare two documents or versions of the same document within the Partner for Windows case file. In Fig 1, the comparison screen shows the original document and the modified version, with the comparison document in the middle of the screen. A summary of the changes is shown in the bottom pane with the ability to click from the change to the relevant part of the modified document.

## BENEFITS

### Improve Productivity

- Assure that edits in multiple documents are accurately displayed
- Handle complex and long documents with great accuracy
- Change summary to quickly capture the intent of the changes

### Ensure Compliance

- Track and record changes to information and respond to electronic discovery requests
- Report on changes across document life cycles and deviations from standard templates and master documents

## ABOUT PARTNER FOR WINDOWS

Partner for Windows is a comprehensive practice and case management system including accounting, case and document management, time recording and billing which together form a complete system to meet the back and front office requirements of a modern legal practice.

The extensive functionality of Partner for Windows can further be enhanced using a range of specialist third party solutions designed to address key business issues for the legal profession. Each of these solutions is seamlessly integrated into Partner for Windows to ensure that the single practice and case management database remains at the core of the system.



## CONTACT

**Sales:** 01489 609010

**Email:** tfb@tikittfb.com

**Web:** www.tikittfb.com

### Postal Address:

1590 Parkway  
Solent Business Park  
Fareham  
Hampshire  
PO15 7AG

### Enable Multi-Party Review

- Review document changes from multiple authors and contributors
- Avoid version/master proliferation and confusion
- Supports simple or complex document workflows

### Proven Accuracy

- Proven technology for content comparison using the engine that is the “gold standard” for document comparison to 85% of the Professional Service 250, 87% of the Fortune 100 and over 1 million users in 65 countries worldwide

### Simple integration with Partner for Windows Case Manager

- Scalable server solution built from the ground up for specific users or firm-wide deployment
- Simple integration with Partner for Windows to enable one-click comparisons between documents and or versions thereof.
- Option to run in-house or to integrate to Workshare’s secure hosted service

### ABOUT TIKITTFB

With more than 30 years of dedication to the legal profession, TikitTFB supports over 600 legal practices throughout the UK with managing risk, ensuring compliance and enhancing profitability using our award-winning Partner for Windows Practice and Case Management system.

Partner for Windows uses industry standard Microsoft technology, enabling the software to be smoothly integrated into existing infrastructures. Catering for firms of all shapes and sizes, Partner for Windows provides a flexible and comprehensive solution which can be readily tailored to meet the needs of practices now and in the future.

Part of the Tikit Group, provider of IT services and software to 90% of the UK’s top 100 law firms, TikitTFB is well positioned to make magic circle technology accessible and affordable to large regional and high street firms.

### ABOUT WORKSHARE

Workshare provides technology solutions to more than one million legal professionals in 65 countries. Workshare’s document comparison, collaboration and security solutions provide risk management and security to over 14,000 organisations worldwide.

### OTHER SOLUTIONS THAT CAN BE USED WITH DOCUMENT COMPARE SERVER ARE:

**Case Manager** for case and document management  
**eCopy ShareScan** for document imaging  
**Postroom Partner** for document scanning and allocation

### CONTACT

**Sales:** 01489 609010  
**Email:** [tfb@tikit.com](mailto:tfb@tikit.com)  
**Web:** [www.tikittfb.com](http://www.tikittfb.com)

**Postal Address:**  
1590 Parkway  
Solent Business Park  
Fareham  
Hampshire  
PO15 7AG